

STANFORD ACQUIRE PROCESS IMPROVEMENT PROJECT

Team Members

- AGNETA CHELIMO - Coordinator
- LILIAN OKOTH - Team Leader
- PETER SAKWA
- JOHN NDUNG'U
- ANNETE KINGWA
- AYUB ALEMBI
- FLORENCE MIRITI
- CHARITY KIANJI



Mentor: DR. LYDIA OKUTOYI
Sponsors: Dr. Sigilai-Director medicine, Mrs. Githire DCNO

Problem statement

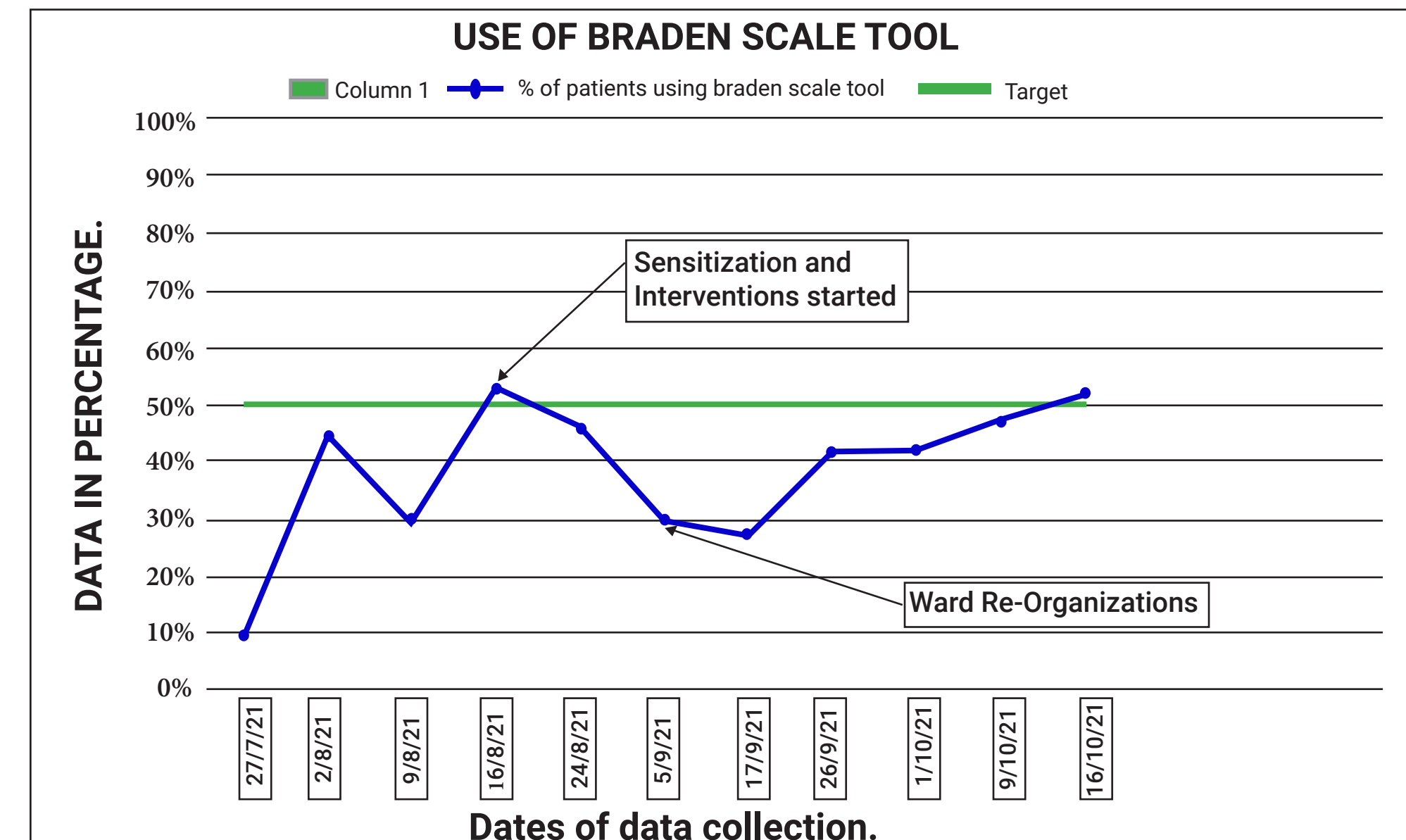
Pressure ulcers has been a major problem in KNH as 30% of inpatients develop pressure ulcers during hospitalization.

This contributes to increased length of stay, cost of care, high morbidity and mortality rate in these patients.

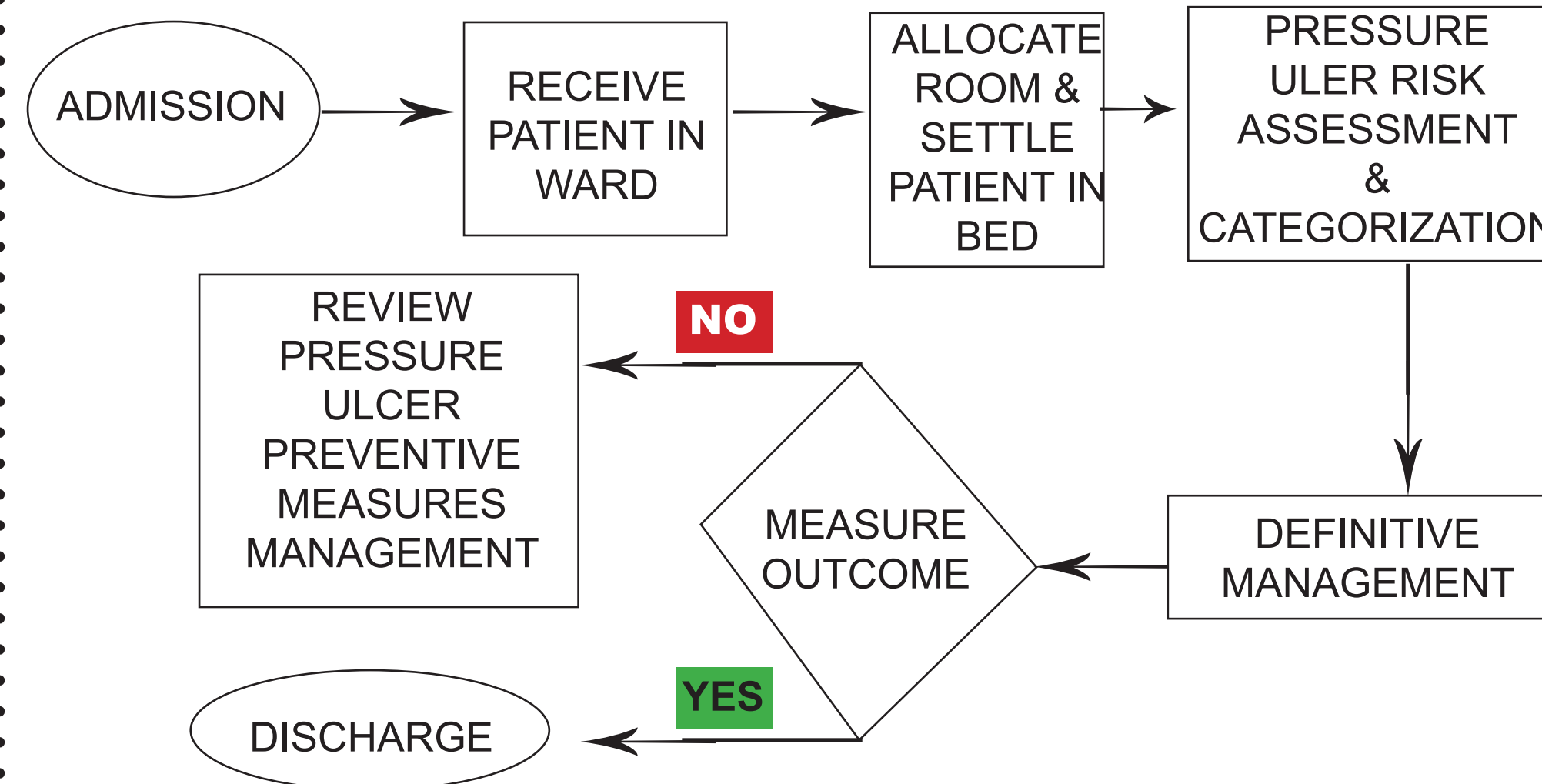


THE TARGET (SMART GOAL)

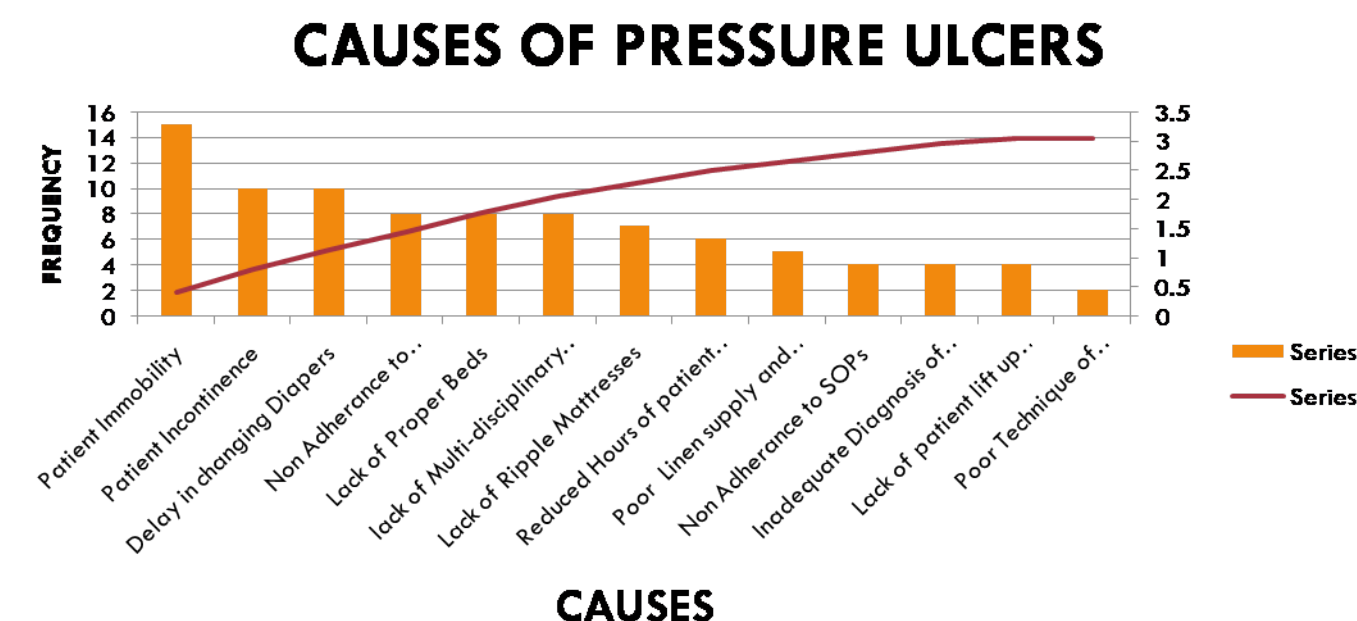
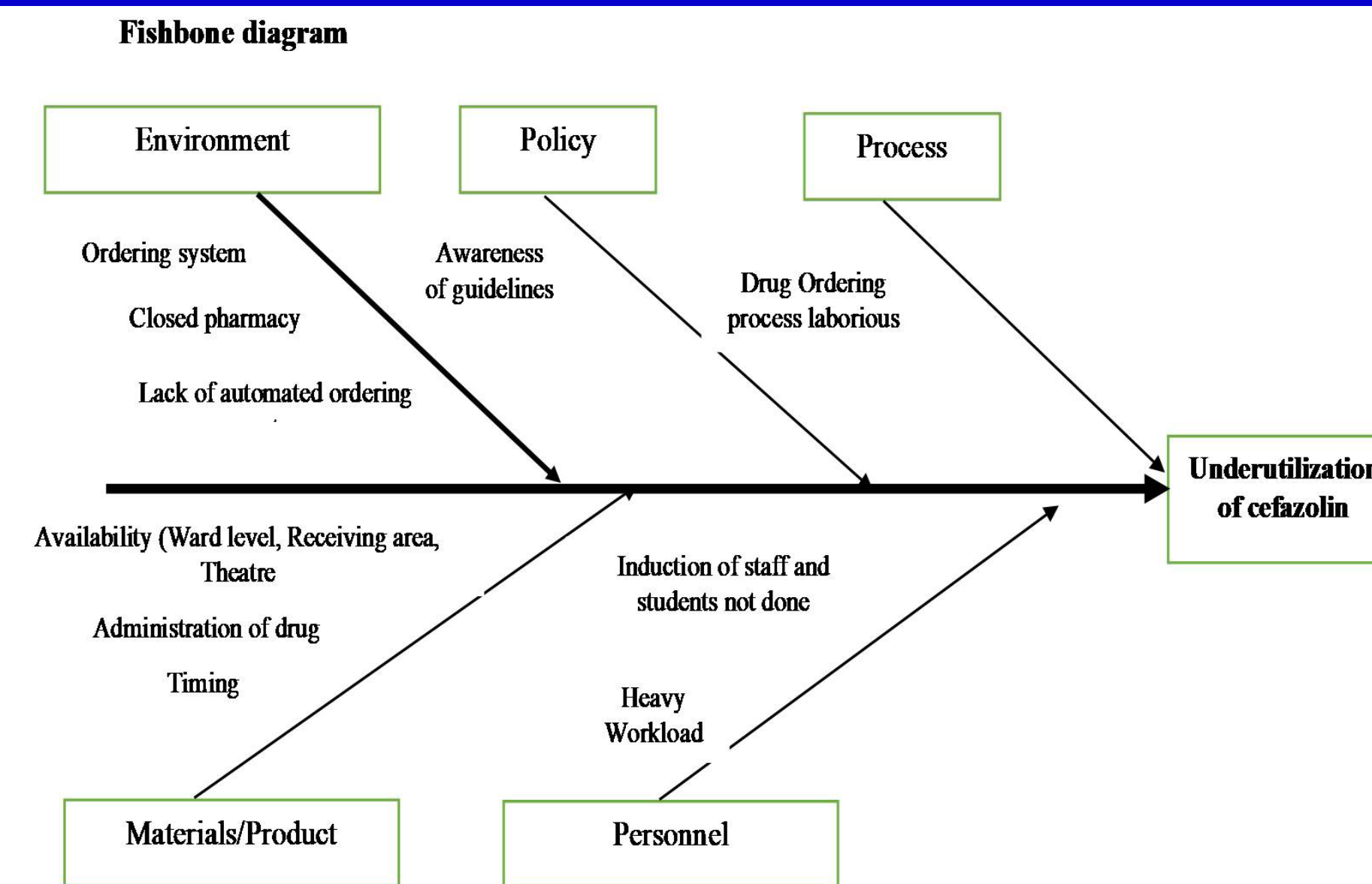
Increase utilization of pressure ulcer care bundle from 9% to 50% in medical wards, KNH by end of October, 2021



Intervention Flow map



CAUSE AND EFFECT DIAGRAM (FISHBONE), PARETO



Key learning points

- Team work
- Initiative and Individual commitment to the process

From fish bone to Key drivers

KEY DRIVERS

DEVELOPMENT OF KNH PRESSURE ULCER CARE BUNDLE

INTERVENTIONS

Weekly CME on the three components of pressure ulcer carebundle

Printing and displaying of care bundle in pilot wards

Assisting patient meet elimination needs in the most suitable way

RISK FACTORS AND SKIN ASSESSMENT

Comprehensive skin assessment upon admission

Appropriate use of modified BRADEN scale

CME on skin assessment, Braden scale and pressure ulcer management

STAFF SENSITIZATION

Daily reminders to nurses through poster

Two hourly scheduled turning

ASSIST PATIENT WITH BED MOBILITY

Assisting patient meet elimination needs in the most suitable way

KEY DRIVERS

DEVELOPMENT OF KNH PRESSURE ULCER CARE BUNDLE



INTERVENTIONS

- Printing and displaying large A4 posters at A&E and medical wards on the pressure ulcer care bundle.

- Conducting CME's on the care bundles in pilot wards.

- Ensure availability of Braden scale tool KNH 507.

KEY DRIVERS

RISK FACTORS AND SKIN ASSESSMENT



INTERVENTIONS

- Staff sensitization on pressure ulcer care bundle.

- Comprehensive skin assessment upon admission to include, moisture, color, temperature, consistency and integrity documented in the nursing cardex (notes) and admission notes within 8 hours of admission

- Use of modified BRADEN scale filled within the first 24 hours of admission.